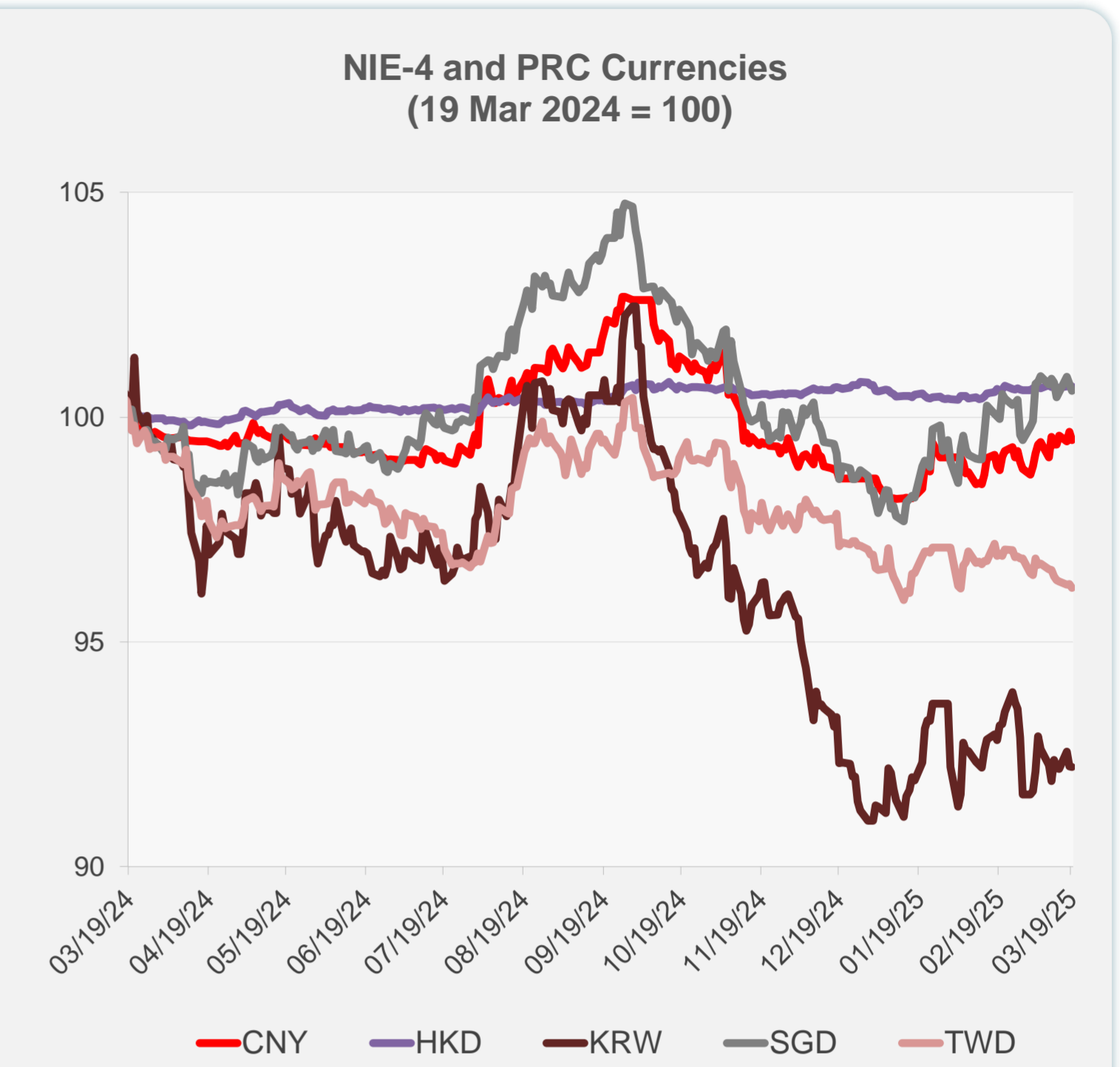
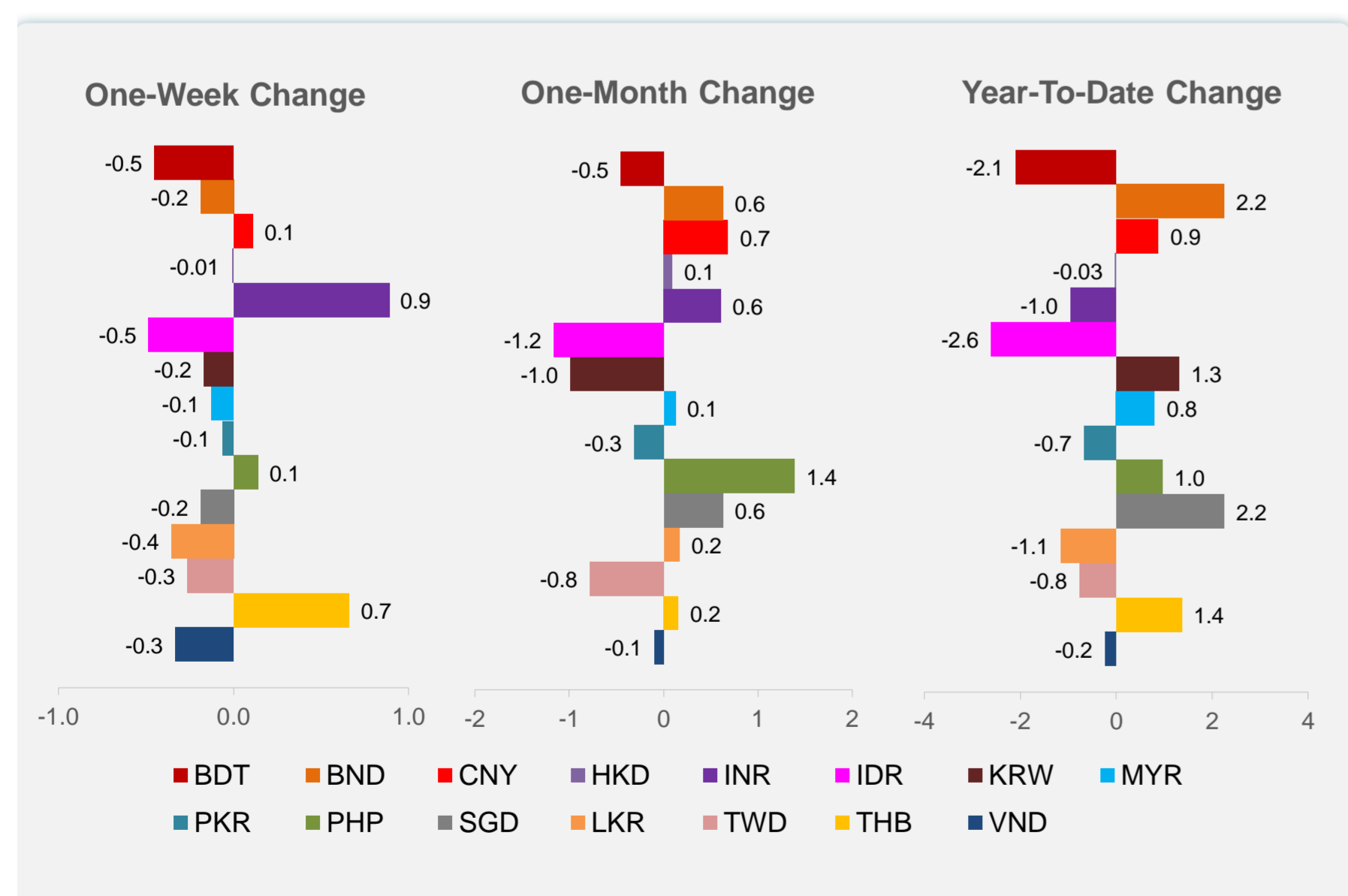
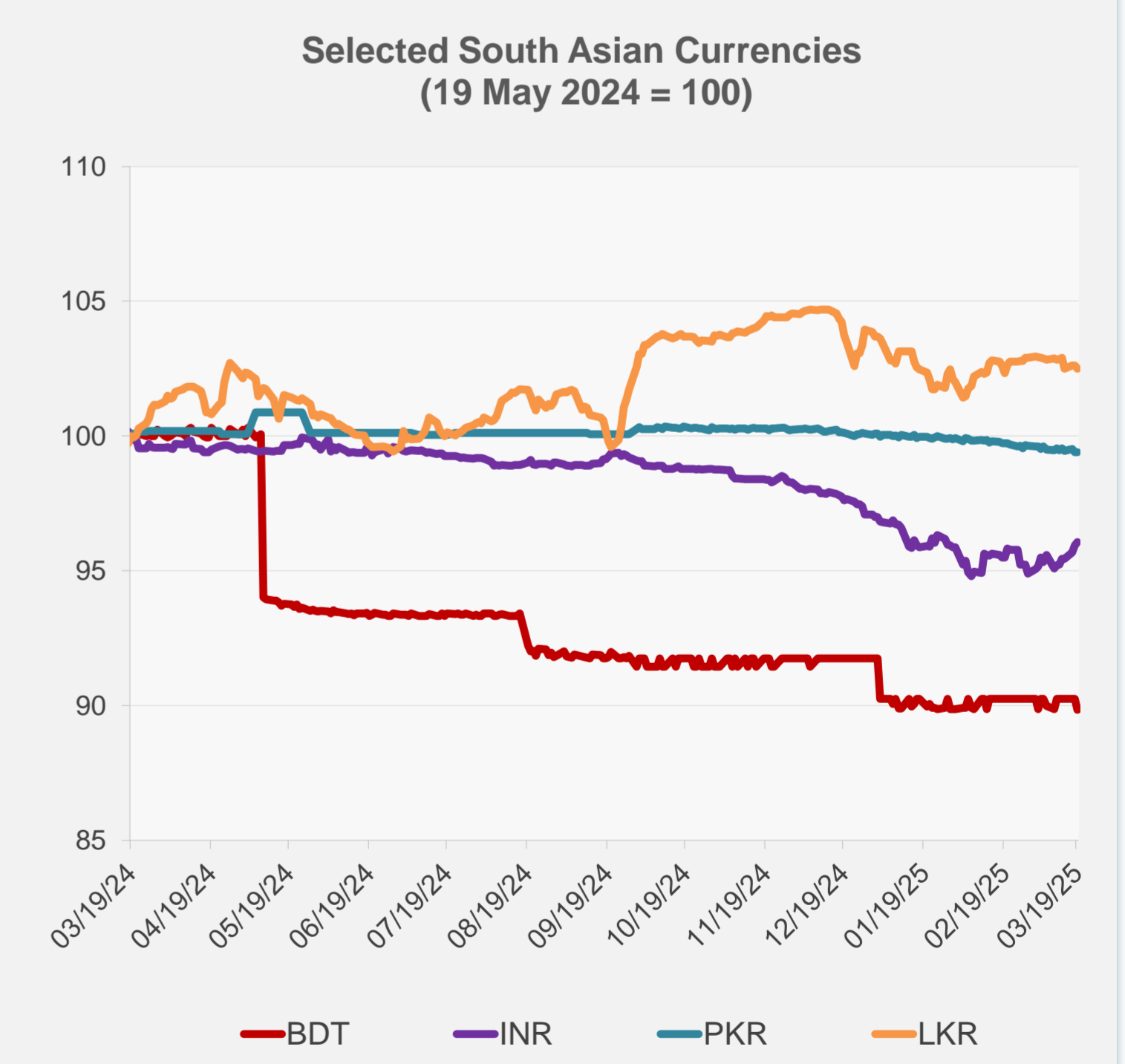
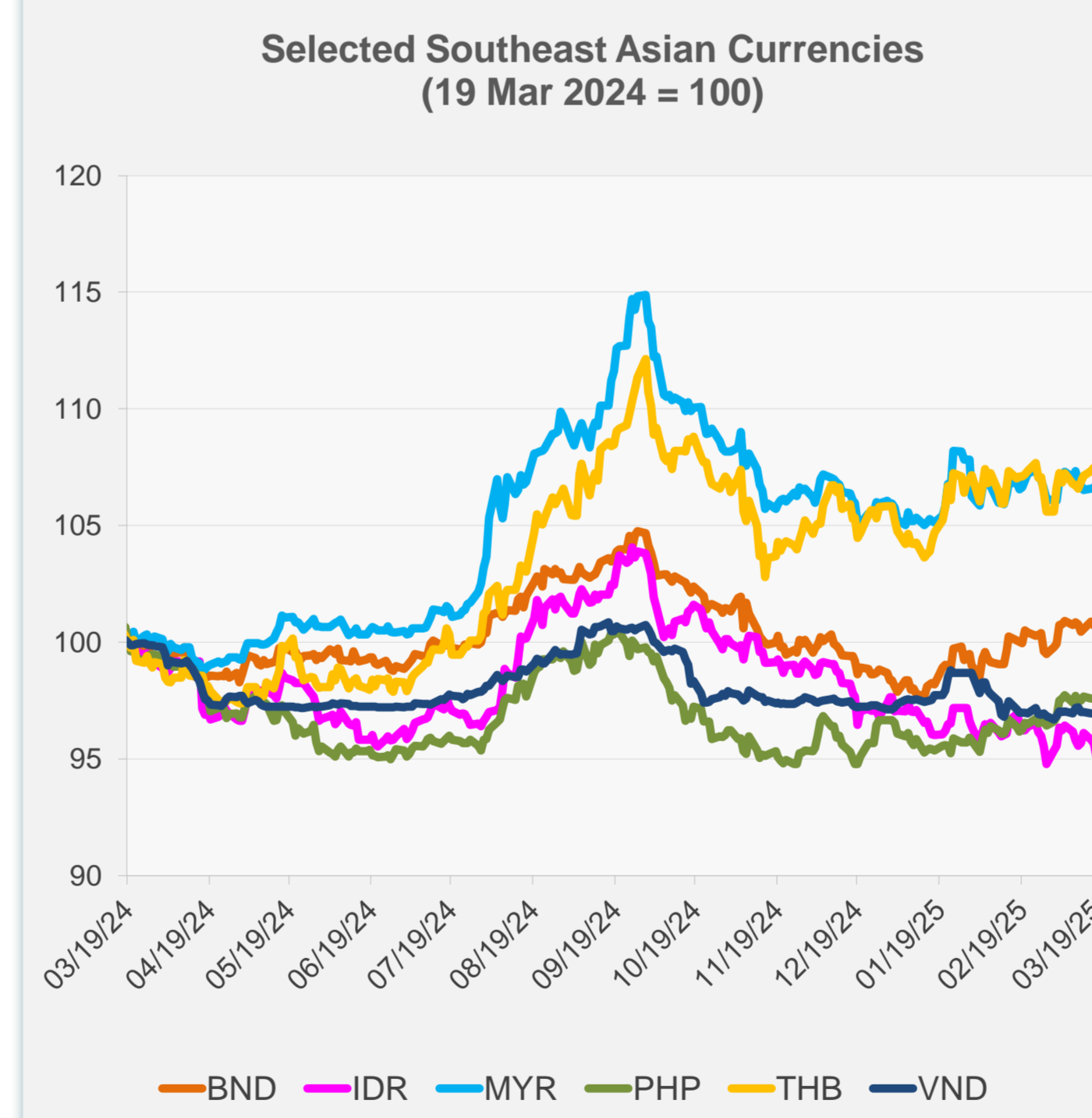


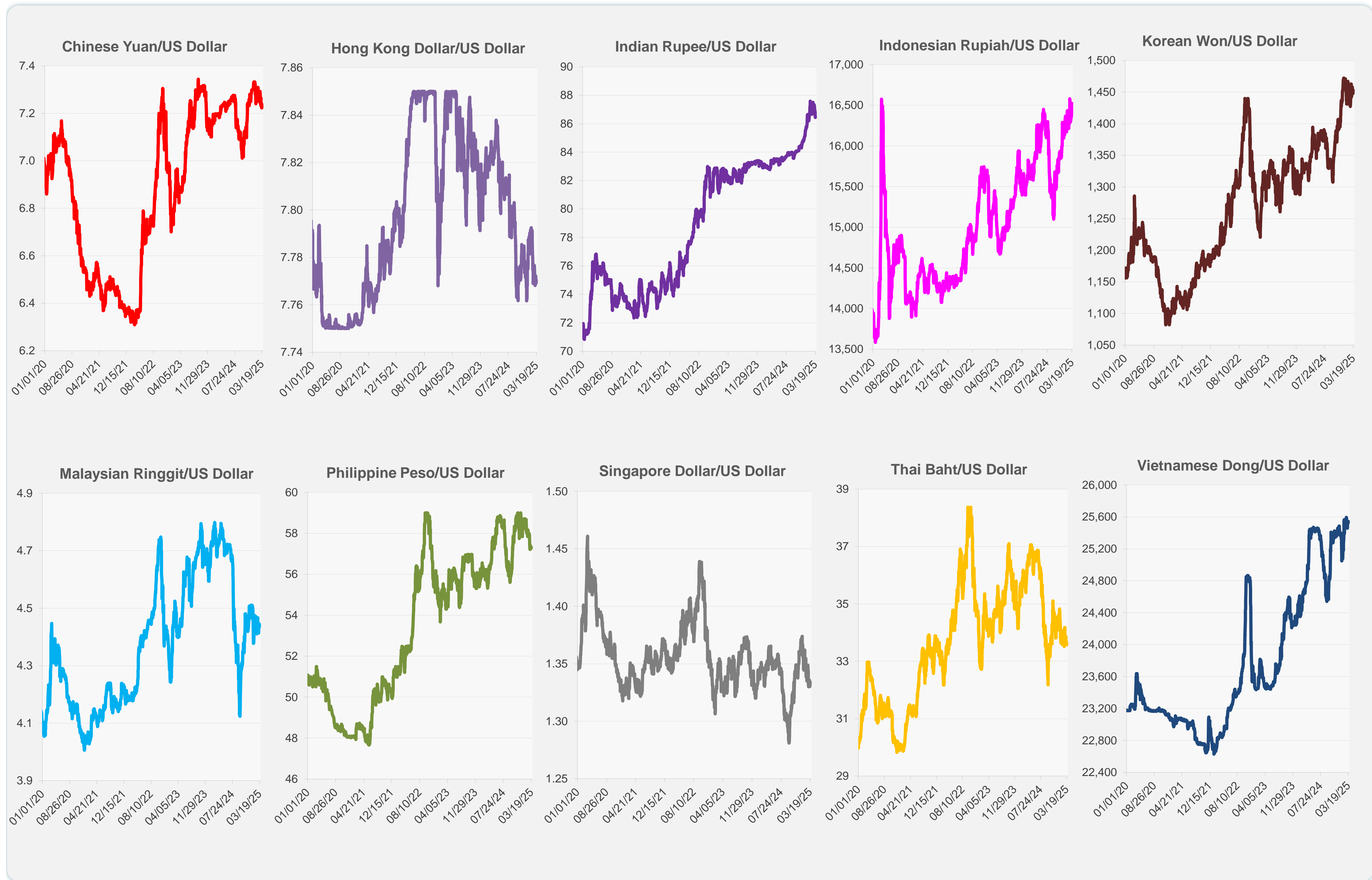
	Latest Closing	% change from Previous Day	% change from 01-Jan-25
Euro	0.92	-0.46	5.04
Japanese yen (JPY)	150.04	-0.37	4.75
Bangladeshi taka (BDT)	122.05	-0.45	-2.09
Brunei dollar (BND)	1.33	-0.16	2.25
Chinese yuan (CNY)	7.24	-0.19	0.88
Hong Kong dollar (HKD)	7.77	-0.01	-0.03
Indian rupee (INR)	86.44	0.14	-0.95
Indonesian rupiah (IDR)	16,525.00	-0.61	-2.60
Korean won (KRW)	1,453.10	-0.02	1.31
Malaysian ringgit (MYR)	4.44	0.20	0.80
Pakistan rupee (PKR)	280.25	0.02	-0.67
Philippine peso (PHP)	57.30	0.01	0.96
Singapore dollar (SGD)	1.33	-0.16	2.25
Sri Lanka rupee (LKR)	296.40	-0.11	-1.15
Taipei,China NT dollar (TWD)	33.04	-0.10	-0.76
Thai baht (THB)	33.64	-0.19	1.36
Vietnamese dong (VND)	25,545.00	-0.08	-0.23



NIE = Newly Industrialized Economies



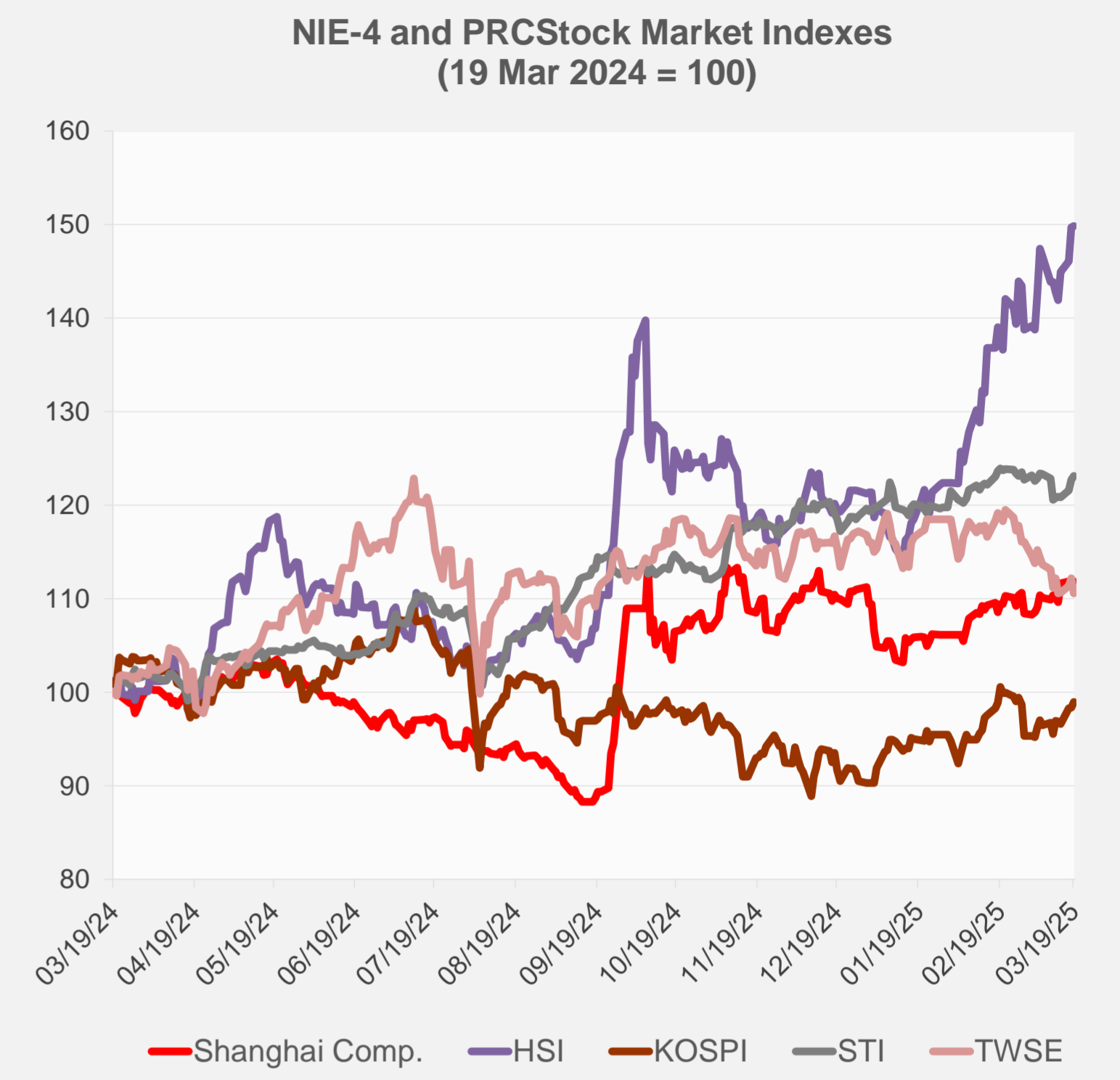
Note: Negative/Decreasing values indicate depreciation of local currency, and positive/increasing values indicate appreciation.
Source: ADB calculations using data from Haver Analytics.



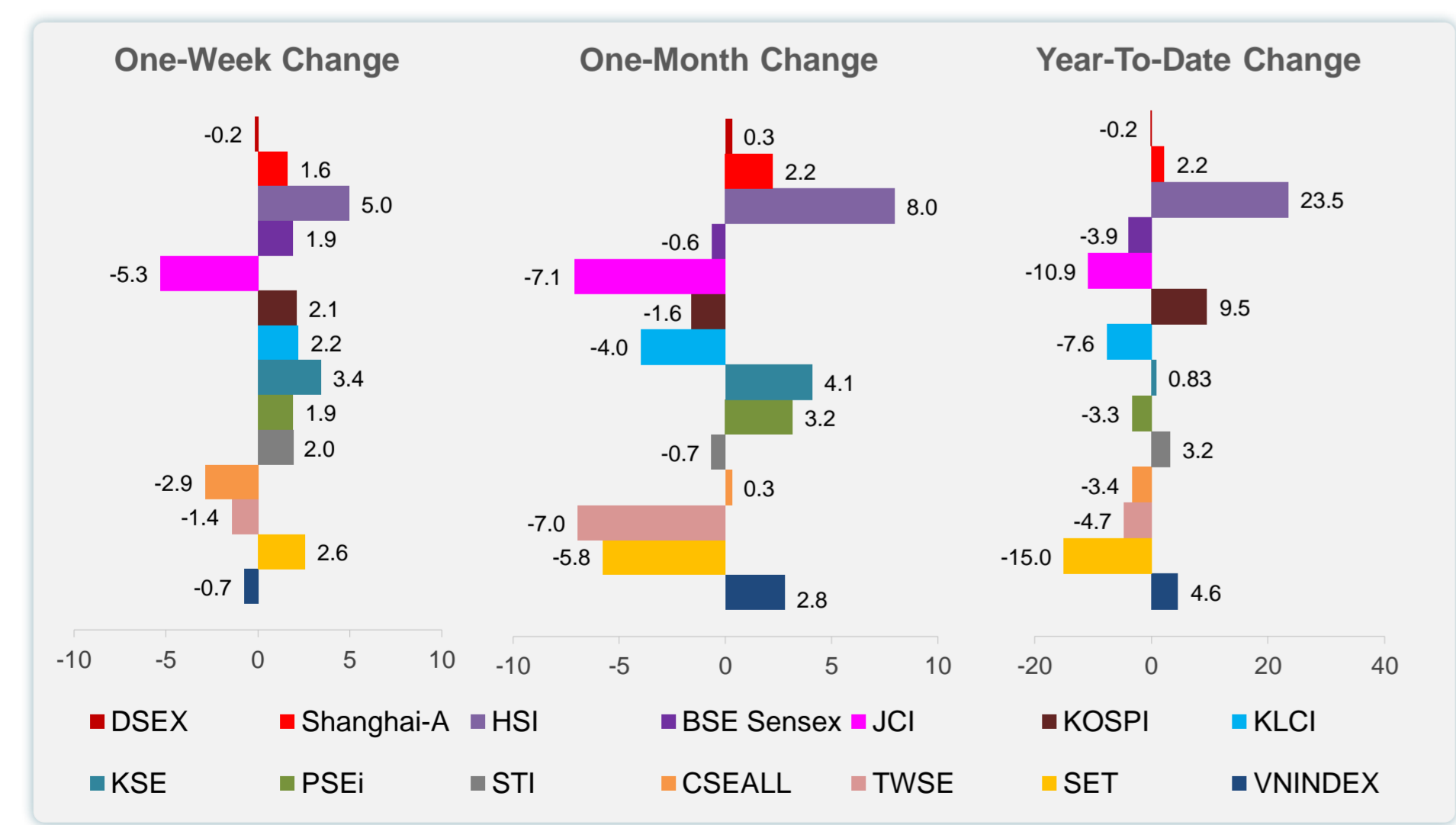
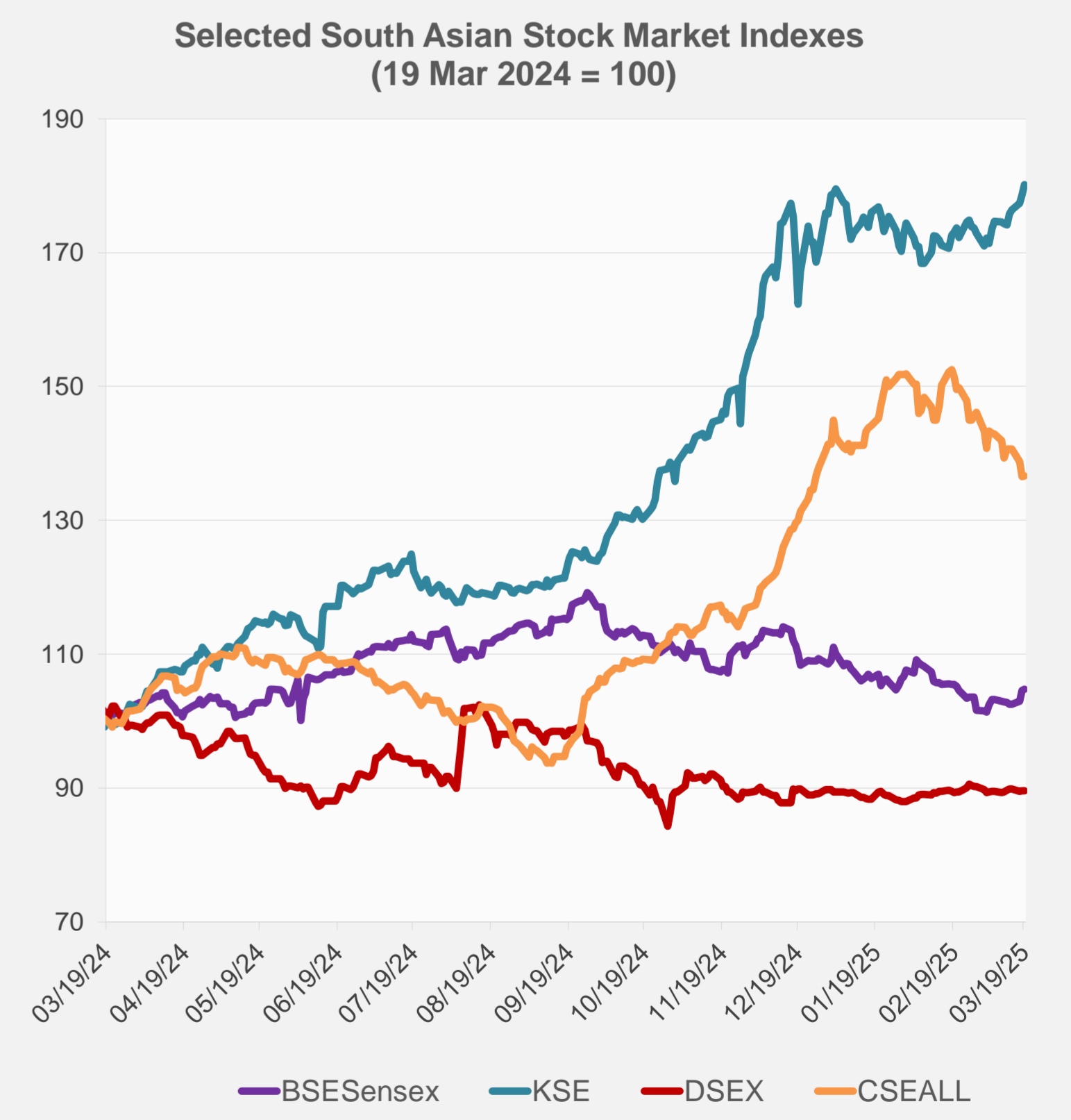
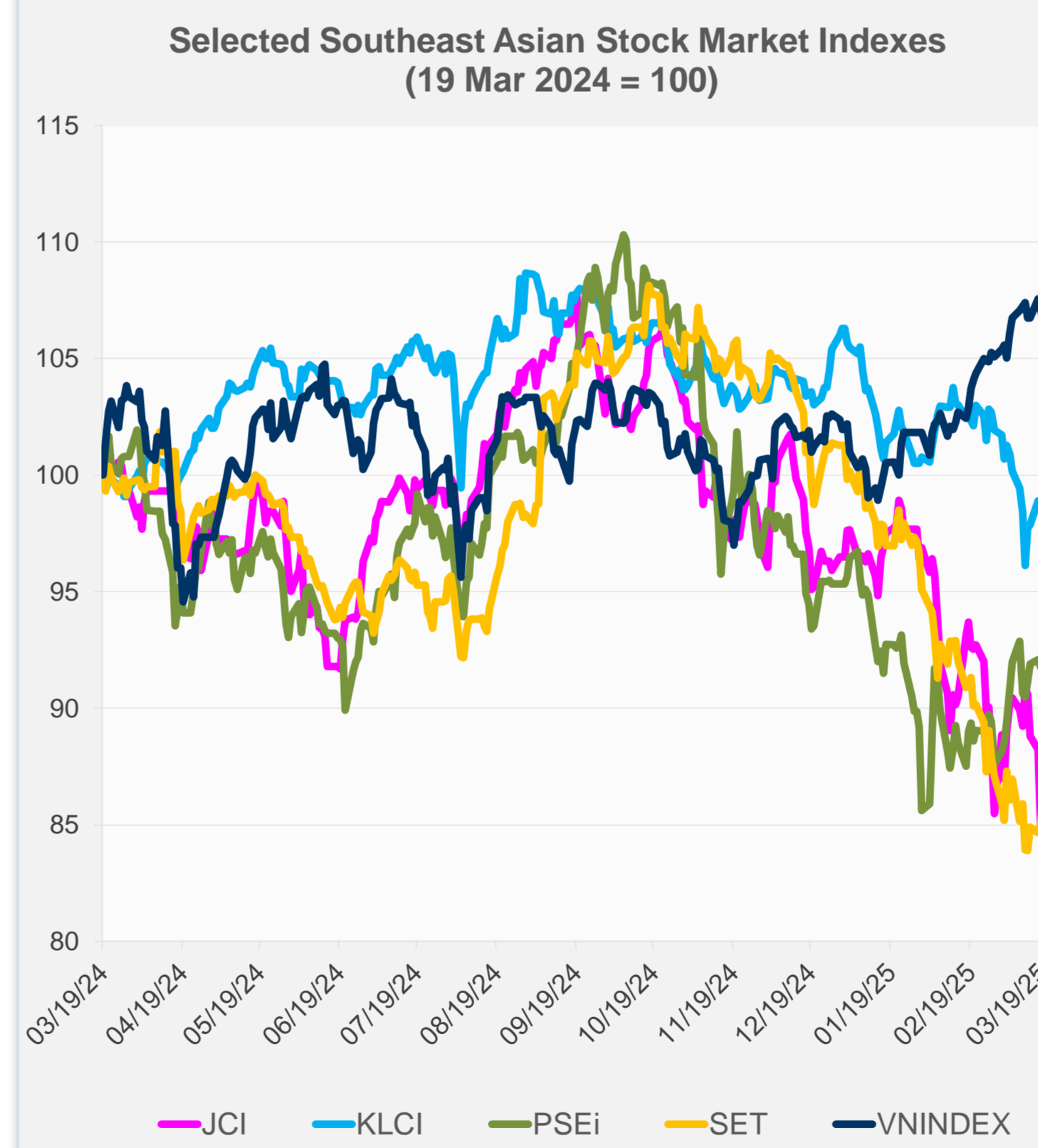
Source: Haver Analytics.

Daily Market Watch
STOCK INDEXES

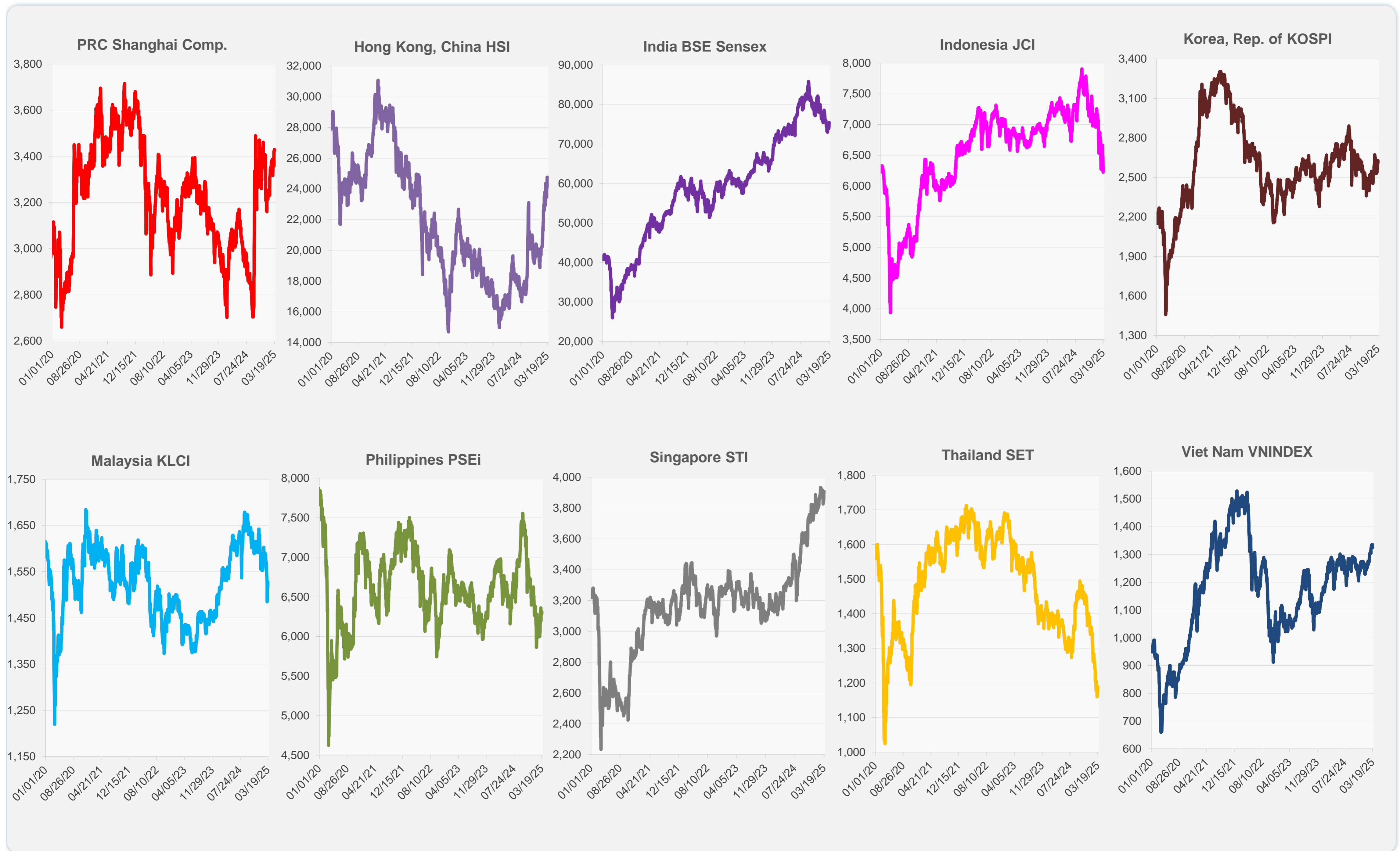
	Latest Closing	% change from Previous Day	% change from 01-Jan-25
US Dow Jones Ind Avg	41,964.63	0.92	-1.36
US NASDAQ	17,750.79	1.41	-8.08
US S&P 500	5,675.29	1.08	-3.51
UK FTSE 100	8,706.66	0.02	6.53
EURO STOXX 50	5,507.36	0.41	12.49
Japan NIKKEI 225	37,751.88	-0.25	-5.37
Bangladesh DSEX	5,207.36	-0.06	-0.21
PRC Shanghai Comp.	3,426.43	-0.10	2.23
Hong Kong, China HSI	24,771.14	0.12	23.49
India BSE Sensex	75,449.05	0.20	-3.90
Indonesia JCI	6,311.66	1.42	-10.85
Korea, Rep. of KOSPI	2,628.62	0.62	9.55
Malaysia KLCI	1,517.66	-0.66	-7.59
Pakistan KSE 100	117,974.02	0.83	0.83
Philippines PSEi	6,313.12	0.45	-3.30
Singapore STI	3,908.31	0.34	3.19
Sri Lanka CSEALL	15,406.16	0.08	-3.38
Taipei, China TWSE	21,960.83	-1.40	-4.66
Thailand SET	1,189.66	1.15	-15.04
Viet Nam VNINDEX	1,324.63	-0.48	4.57



NIE = Newly Industrialized Economies



Sources: ADB calculations using data from CEIC Data Company and Haver Analytics.



Sources: CEIC Data Company and Haver Analytics.

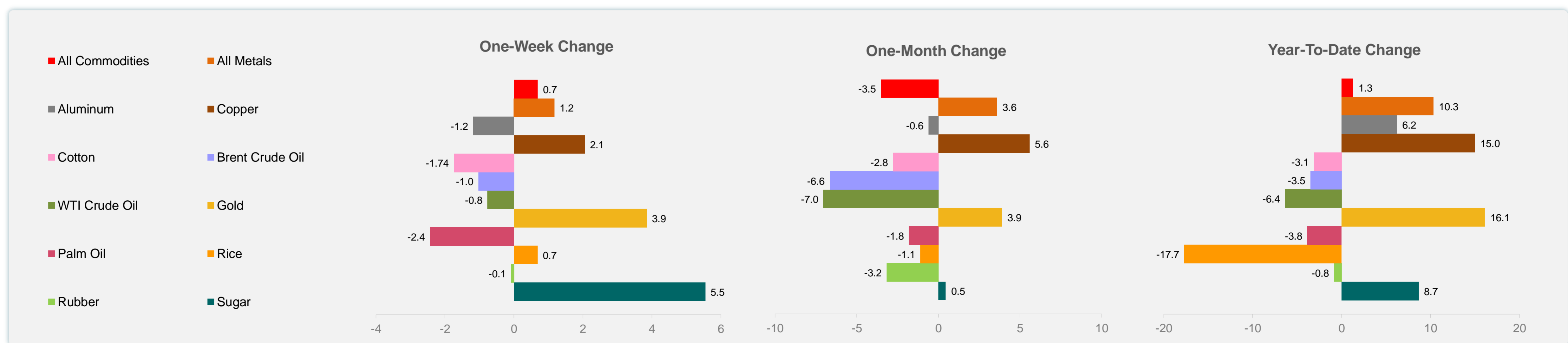
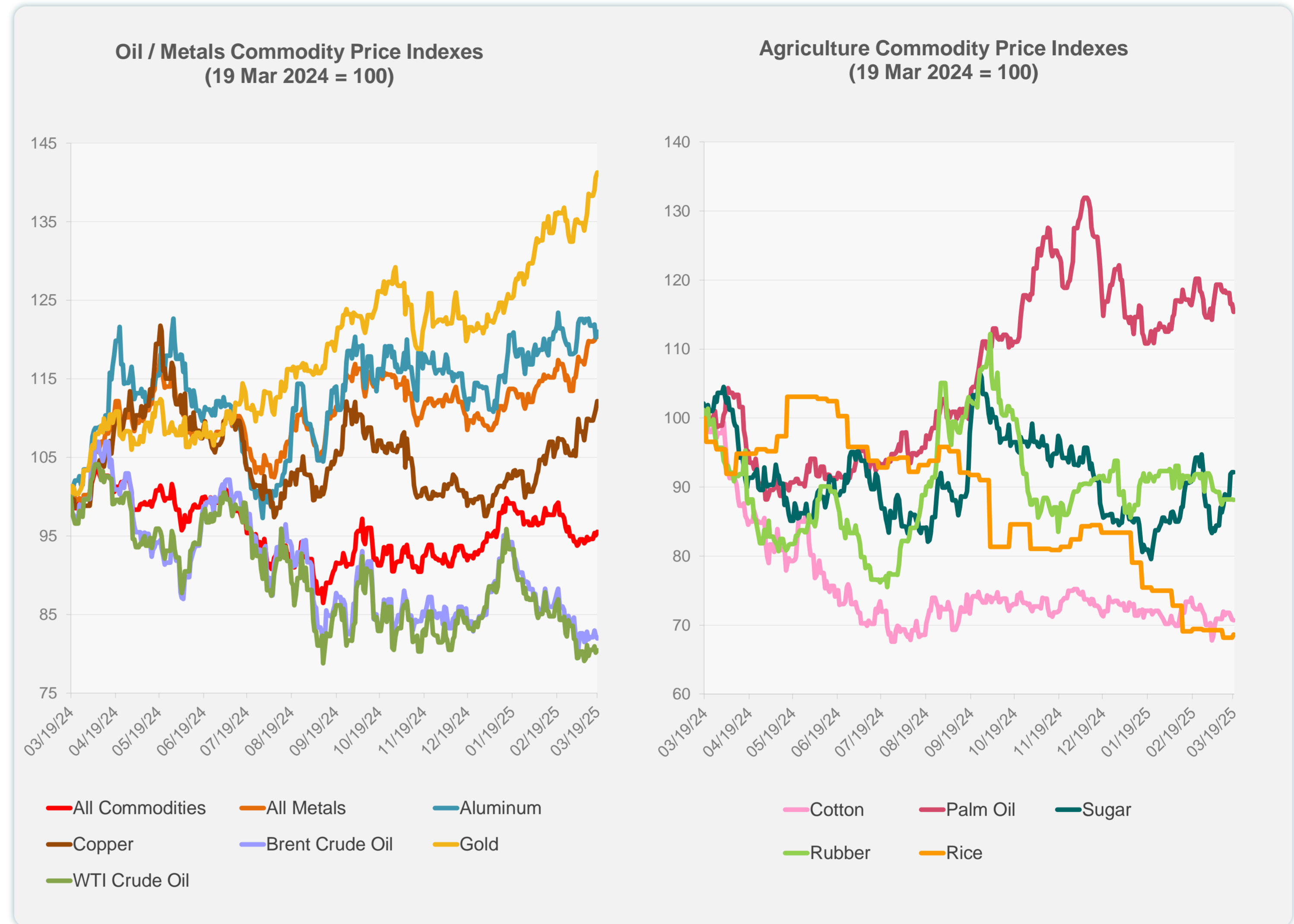
Daily Market Watch
COMMODITY PRICES

20 March 2025, 9:00 AM Manila

	Unit	Latest Closing	% change from Previous Day	% change from 01-Jan-25
S&P All Commodities	US\$	556.90	0.50	1.32
S&P All Metals	US\$	339.17	0.07	10.34
Aluminum	US\$/metric ton	2,684.56	0.65	6.24
Copper	US\$/metric ton	9,951.83	1.00	15.01
Cotton	US cents/lb	63.85	-0.19	-3.11
Brent Crude Oil	US\$/barrel	71.50	-0.38	-3.52
WTI Crude Oil	US\$/barrel	67.16	0.39	-6.36
Gold	US\$/troy oz	3,047.79	0.43	16.13
Palm Oil	US\$/metric tonne	1,057.82	-0.98	-3.85
Rice ¹	US\$/metric ton	442.00	0.68	-17.69
Rubber ²	US\$/kg	234.80	-0.09	-0.84
Sugar	US cents/lb	19.78	0.00	8.68

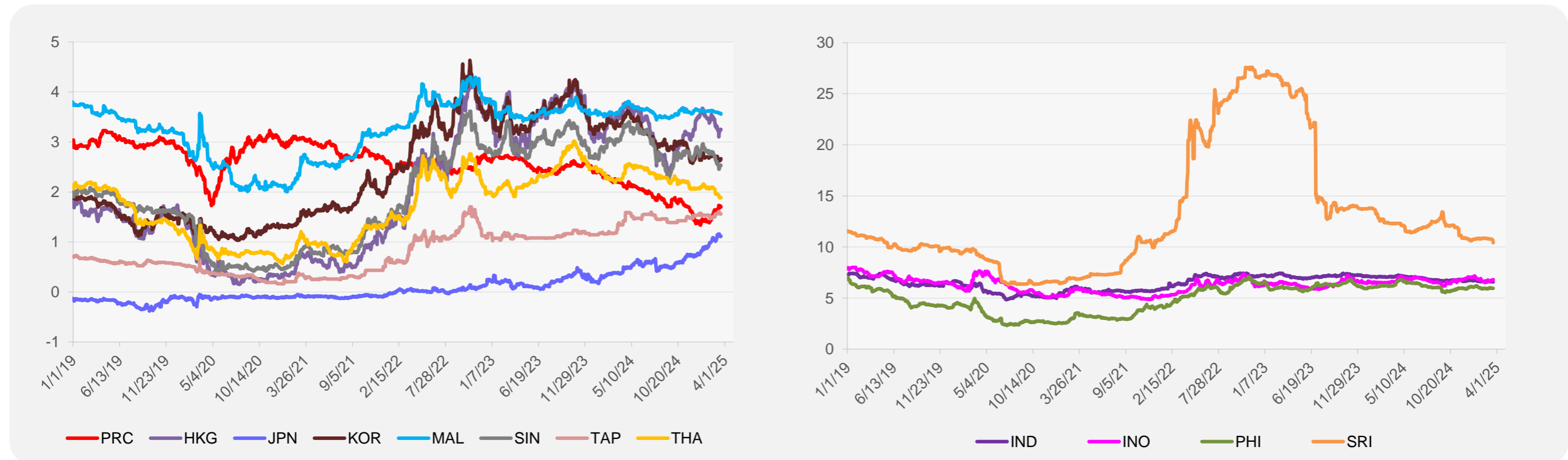
¹ Latest closing price from 19 March 2025.

² Singapore Exchange, Ribbed Smoked Sheet Rubber.

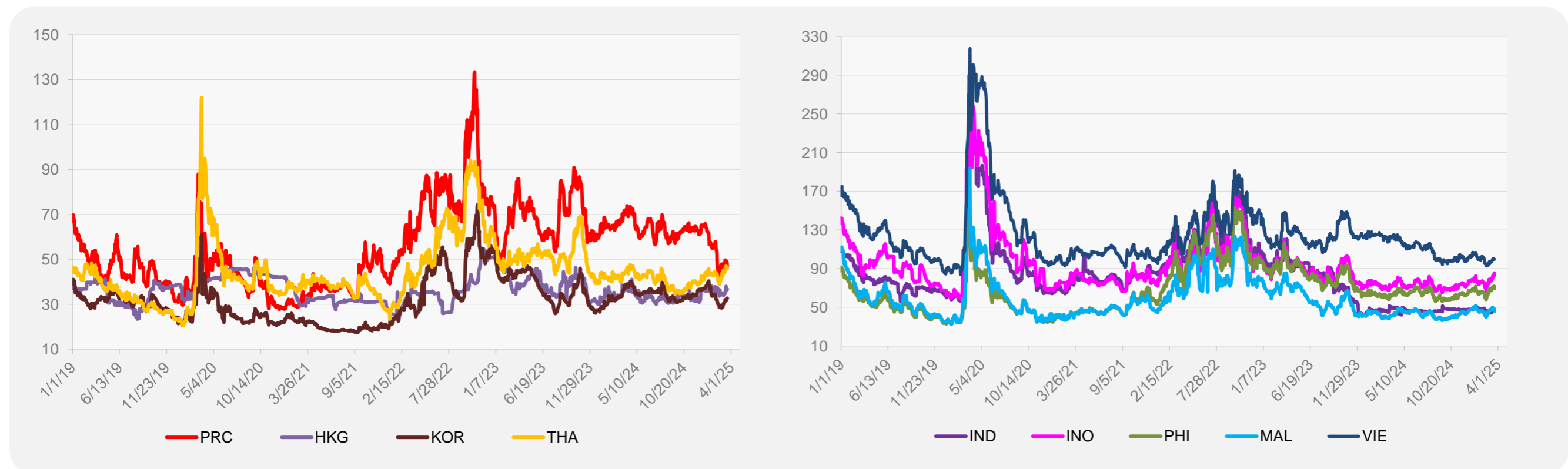


Source: ADB calculations using data from Bloomberg.

5-YEAR LOCAL CURRENCY GOVERNMENT BOND YIELDS (%)



5-YEAR CREDIT DEFAULT SWAP¹



¹ In USD and based on sovereign bonds.
Source: ADB calculations using data from Bloomberg.